

Oil Analyzers INC.

Fluid Analysis Program

| 0 | 1 | 2 | 3 | 4 |
|--------|----------|---|----------|---|
| NORMAL | ABNORMAL | | CRITICAL | |
| 0 | 1 | 2 | 3 | 4 |

About Fluid Analysis

Fluid analysis is a preventive maintenance tool that provides diagnostic testing designed to evaluate lubricant condition, component wear and contamination in mobile and industrial applications. Routine fluid analysis can detect lubricant or equipment issues before major problems develop.

Fluid Analysis Helps You Save Money

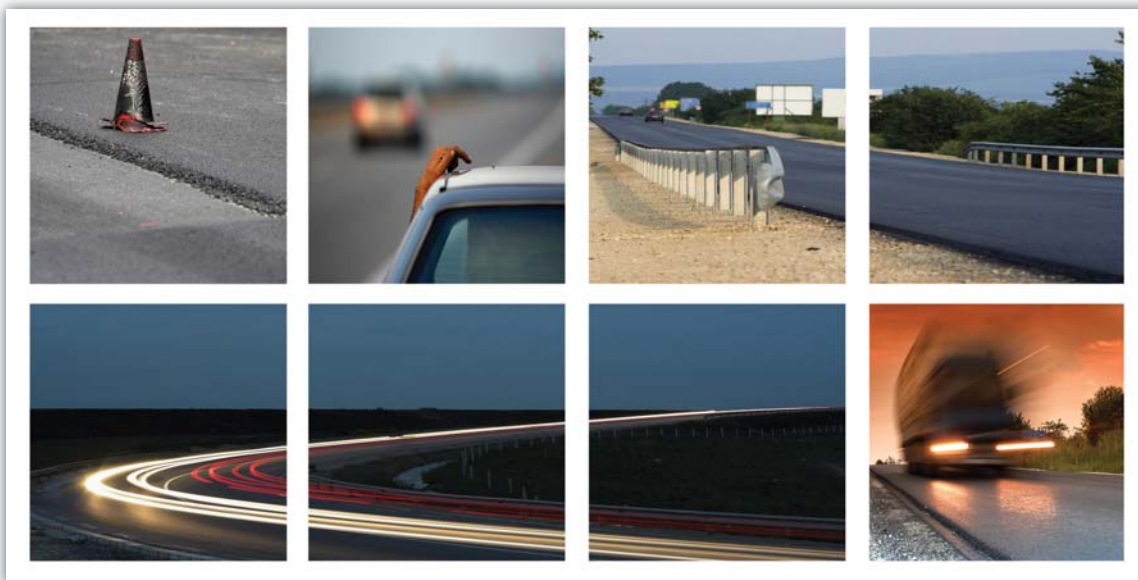
Because fluid analysis provides a comprehensive look at the condition of lubricants and internal component wear, tracking sample results over a period of time can help save money.

- **Maximize oil drain intervals.** Monitoring the condition of the oil allows you to optimize drain intervals so that you capitalize on the fluid's full service life. Performing fewer oil changes minimizes maintenance costs and maximizes uptime.
- **Extend equipment life.** Monitoring system cleanliness and filtration efficiency can help you keep your equipment longer and significantly reduce replacement costs.
- **Prevent major problems.** State-of-the-art fluid analysis identifies dirt, wear particles, fuel dilution, coolant and other contaminants that can cause catastrophic failure or significantly shorten equipment life.
- **Maximize asset reliability.** Testing and analysis ensure that equipment is up, running and making money.
- **Increase resale value.** Analysis results provide valuable sampling history documentation that justifies higher equipment resale values.

Oil Analyzers Fluid Analysis

The Oil Analyzers fluid-analysis program protects valuable equipment by providing solutions for lubrication concerns through accurate and easy-to-understand fluid analysis, timely reporting and an unparalleled commitment to personal, friendly customer service. Oil Analyzers works with fully equipped laboratories staffed by highly trained analysts and offers a complete line of oil analysis services to help you get the most from your lubricants and extend the life of your equipment.

- **Personalized Service.** Oil Analyzers provides personalized customer service. Reports are easy to understand and recommendations are included so you know exactly what you should do to provide the best care for your equipment. In addition, Oil Analyzers customer service representatives are available by phone and email to answer questions.
- **High-Quality Testing.** Oil Analyzers fluid analysis is performed at independent ISO 17025 A2LA accredited testing laboratories. This is the highest level of quality attainable by a testing laboratory backed by the most stringent accrediting body in the industry. You can be confident that the results you receive are accurate, repeatable and traceable to a standard.
- **Innovative Information Technology Solutions.** Oil Analyzers online reporting software, HORIZON,[®] delivers your results almost immediately after sample processing is complete. The software's management reports take your fluid-analysis program to the next level by helping you manage your data and your program efficiently and effectively.



Sampling and Trend Analysis

The first step in any fluid-analysis program is obtaining a sample. Regular sampling and trend analysis – monitoring test data over an extended period of time – provides the information you need to continually maximize asset reliability and increase profits. Comparing a component's most recent samples to its historical data is instrumental in identifying trends that can indicate potential problems or possible failure.

Best Practices

Fluid analysis is most effective when samples are representative of typical operating conditions. Dirt, system debris, water and light fuels tend to separate from lubricants and coolants when system temperatures cool. For optimum results:

- Take samples while systems are operating under normal conditions or immediately after shutdown while they are still at operating temperature.
- Take samples at regularly scheduled intervals.
- Take samples from the same sampling point each time.

Suggested Sampling Intervals and Methods

Although an equipment manufacturer's recommendations provide a good starting point for developing preventive maintenance practices, sampling intervals can easily vary. A piece of equipment's importance to production is a major consideration for determining sampling frequency, as are environmental factors such as hot, dirty operating conditions, short trips with heavy loads and excessive idle times. See the chart below for suggested sampling intervals and methods.*



| COMPONENT | INTERVAL | SUGGESTED METHOD & LOCATION |
|-------------------------------------|-----------------------------------|---|
| MOTOR VEHICLE | | |
| Gas Engines | 125 Hours/7,500 miles | By vacuum pump through dipstick retaining tube or sampling valve installed in filter return |
| Diesel Engines | 250 Hours/15,000 miles | |
| Gears, Differentials & Final Drives | 250 hours | By vacuum pump through oil level plug or dipstick retaining tube |
| Planetaries | 250 hours | By vacuum pump through oil fill port of system reservoir at mid-level |
| Cooling Systems | 1000 hours | By vacuum pump through radiator cap or fill port of system reservoir at mid-level |
| INDUSTRIAL EQUIPMENT | | |
| Hydraulics | 250-500 hours | By vacuum pump through oil fill port of system reservoir at mid-level |
| Gas Turbines | Monthly or every 500 hours | Through sample valve installed upstream of the filter on the return line or out of the system reservoir |
| Steam Turbines | Bi-monthly or monthly/quarterly | Through sample valve installed upstream of the filter on the return line or out of the system reservoir |
| Gas/Air Compressors | Monthly or at 500 hours/quarterly | Through sample valve installed upstream of the filter on the return line or out of the system reservoir |

*The suggested sampling intervals in the chart above are for conventional (non-synthetic) oils only. When using synthetic motor oil, the lubricant manufacturer's recommended interval should be followed. To extend the service of synthetic motor oil beyond the lubricant manufacturer's recommendation, oil analysis should be conducted.

Obtaining an Oil Sample

Obtaining fluid samples is relatively simple, regardless of the application. Sampling methods may vary according to the type of equipment from which the sample is taken. Mobile vehicles typically require a vacuum pump while common industrial applications may give direct access through a sample valve or system reservoir. Some industrial equipment may require a vacuum pump.

To ensure accurate fluid analysis and reporting, appropriate procedures must be observed. All kits and materials necessary for obtaining an oil sample are outlined on pages 14 and 15.

Sampling with a Vacuum Pump

A vacuum pump is used to take samples from a dipstick or non-pressurized system.

To use a vacuum pump, securely attach a sample bottle to the pump. Attach a clean tube to the top of the pump and tighten the lock ring. Place the free end of the tube into the dipstick retaining tube or oil fill port, making sure not to allow contact between tubing and bottom of reservoir. Pump the plunger until oil flow is consistent and then pump only as needed to maintain consistent flow. The sample bottle should be filled about 3/4 full or to its shoulder. Remove the sample bottle from the vacuum pump and tighten the lid securely.

Sampling through a Sample Valve

Some industrial applications have a sampling port through which a sample can be obtained. This sampling method requires the equipment be in operation. Open the sampling valve and allow a small amount of oil to flush contaminants from the valve. Place the sampling bottle under the valve and obtain the sample. The sample bottle should be filled about 3/4 full or to its shoulder. Ensure the sampling valve is securely closed once the sampling process is complete.

Sampling from a System Reservoir

If collecting a sample through a sample valve is not possible, the equipment's system reservoir can be used.

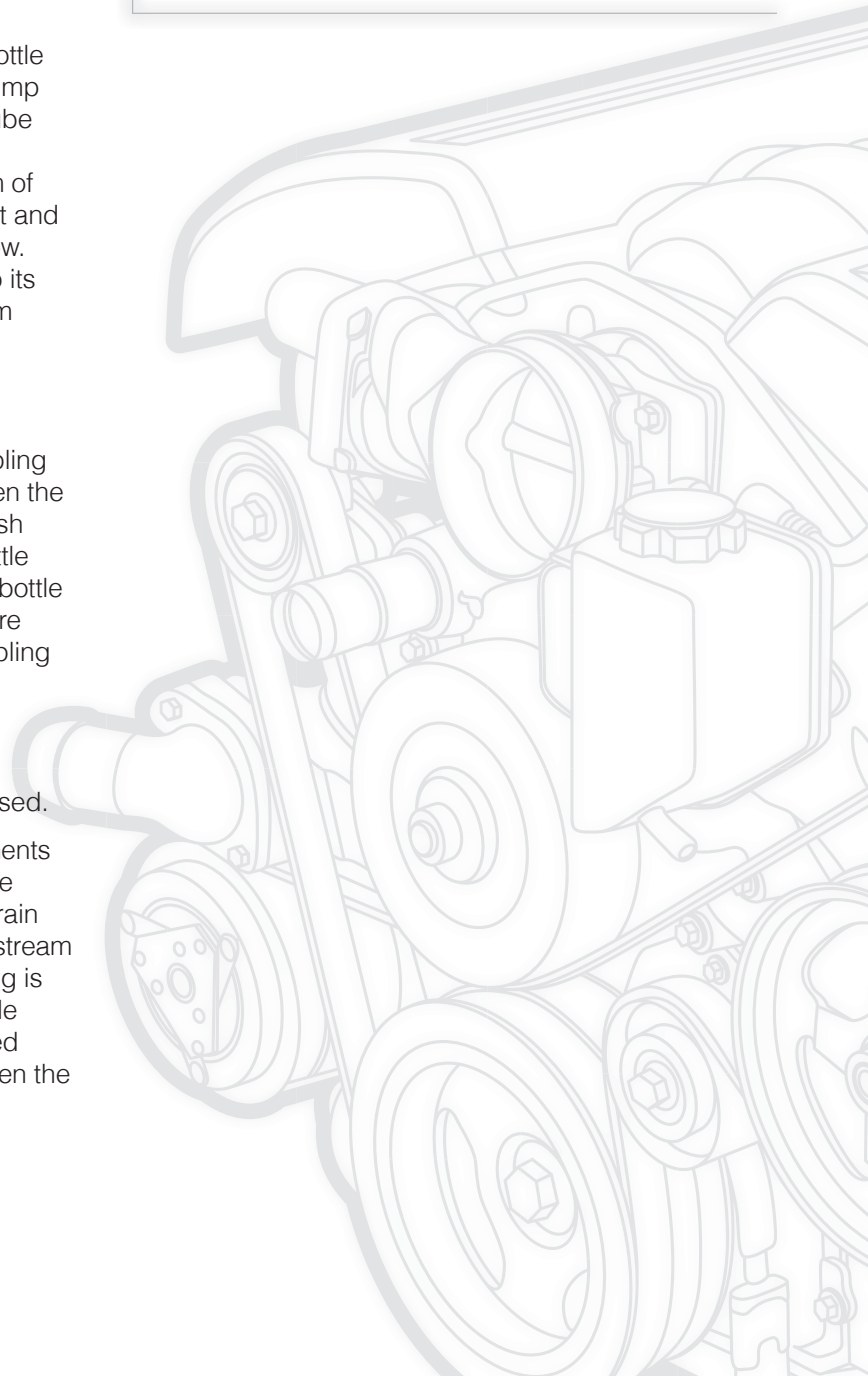
The oil must be drained from the plug for a few moments before the sample is taken so contaminants that have settled around the drain are flushed out. Once the drain has been flushed, place the sample bottle in the oil stream and collect the sample. Using the reservoir drain plug is the least desirable method for obtaining an oil sample because the bottom of the reservoir contains elevated amounts of contaminants. It should be used only when the other options are unavailable.

Mobile Sampling Locations

Appropriate sampling locations for automobiles; light-duty, heavy-duty and over-the-road trucks include the oil dipstick tube, the reservoir drain plug or petcock valve if one has been installed.

Industrial Sampling Locations

Common sampling locations include the oil reservoir, oil filter, sampling port and filtration mount. If excess wear is detected in industrial applications, samples can be taken immediately before or after particular components, such as pumps or valves, to help isolate which component is producing excess wear elements.



Submitting an Oil Sample

Accurately filling out a registration form, affixing a QR-code label to the sample bottle and sending the oil sample to the appropriate lab for analysis are the final steps in submitting an oil sample.

Component Registration Form

Accurate, thorough and complete lube and equipment information not only allows for in-depth analysis, but can eliminate confusion and difficulties that can occur when interpreting results.

A Component Registration Form is included with every sample kit. Always complete the Sample Information section of the form. Fill out the Component Registration section of the form when sampling a component for the first time or to notify the laboratory of a change for a previously registered component or fluid.


The laboratory will request additional information if the registration form is incomplete and there is no information on record from the last sample that was analyzed.

QR-Code Label

The Component Registration Form includes a QR code that corresponds to the sample information you recorded on the form. An identical QR code is included at the top of the Component Registration Form.

- The QR code labeled “APPLY TO SAMPLE” should be filled out and applied vertically to the oil sample bottle.
- The label “RETAIN FOR YOUR RECORDS” should be filled out and maintained for your files.
- Only the right side of the Component Registration Form needs to be mailed with the sample. Retain the left side for your records.

INSTRUCTIONS FOR OIL ANALYSIS SAMPLE FORM



ADVANCED OIL
Kit Questions or Additional Testing: 715-395-0222
Test Results or Equipment Changes: 877-458-3315
Customer Service: custserv@oilreports.com

00000A00000

SAMPLE SUBMISSION INSTRUCTIONS

1 **ATTENTION FIRST TIME USERS!**
Visit www.oilreports.com or call 877-458-3315 to create your account in HORIZON, the online oil analysis portal


2 **Use HORIZON and Sample Submission** to submit sample information online for faster processing if online access is not available, please complete form and submit with sample

3 **Apply label to sample jar**
Ship sample to laboratory
Receive results via email or access online via HORIZON

NOTE: Prepaid USPS/UPS labels to Indianapolis, IN CANNOT be re-addressed to a different location. Small return addresses are for non-postage paid kits only.

OIL ANALYZERS LAB
7451 WINTON DRIVE
P.O. BOX 68963
INDIANAPOLIS, IN 46268

OIL ANALYZERS LAB
4100 N SAM HOUSTON PKWY W
STE 250
HOUSTON, TX 77086



Oil Analyzers

0 0 0 0 0 0 A 0 0 0 0 0 0

Sample reports sent by email only, include email below

ACCOUNT INFORMATION (ACCT: OILANA)

Company Name _____
Contact Joe Smith _____
Address 1234 Main St _____
City / State / Zip Code Superior, WI 54880 _____
Telephone 715-555-5555 _____
Email jsmith@email.com _____

3 **SAMPLE INFORMATION** Baseline Reference

Equipment ID Joe's Truck _____
Secondary ID 2022 Silverado 5.3L _____
Component/Fluid Type (check one)
 Diesel Transmission Bearing Hydraulic
 Gasoline Auto Compressor Gear
 Gasoline Direct Injection Manual Differential Turbine
 Natural Gas Other _____
 Position: Front Rear Left Right Center Chassis
 Date Sample Taken 1-15-25 _____
 Fluid Time 7,500 km hr mo mi day yr
 Component Time 97,356 km hr mo mi day yr
 Fluid Changed Yes No Filter Changed Yes No Amount of Fluid Added Since Last Change qt gal L pt unknown
 Misc _____
 Comments _____

COMPONENT INFORMATION (For first-time samples or changes only)

Manufacturer GM _____
Model 5.3L V8 _____
Product Mfr AMSOIL _____
Product & Viscosity Grade ASM, Signature Series 0W20 ISO SAE

OILUS 02/25

Note: Prepaid shipping labels are already addressed. Do not alter shipping labels. Due to occasional revisions, your sample form may appear slightly different than the example above.

6



Shipping Information

Small return-address labels are provided on the Component Registration Form for non-postage-paid kits. Choose the label for the laboratory nearest you. All prepaid kits go to the Indianapolis Laboratory.

- Adhere the correct return-address label located on the Component Registration Form to the provided mailer.
- Place the Component Registration Form in the clear pocket on the front of the mailer.
- Place the oil sample bottle inside the mailer and seal.
- Apply the appropriate postage. Use a trackable shipping service such as FedEx, UPS or the USPS for mailing samples.

Test Reports and Data Management

Oil Analyzers Inc. and HORIZON® provide your test results almost immediately after processing your oil sample. Analysis reports are available via fax, email or online. To view your oil analysis test results online, go to www.eoilreports.com and click Test Results.

Fast access to oil analysis reports allows you to affect positive changes in your daily maintenance practices.

- Keep sampling schedules on track.
- Identify bottlenecks in turnaround time that are costing you money.
- Summarize unit problems that could influence future purchasing decisions.



Lubricant Analysis Report

North America: 1-877-458-3315

| | | | | |
|--------|----------|---|----------|---|
| 0 | 1 | 2 | 3 | 4 |
| NORMAL | ABNORMAL | | CRITICAL | |

Overall report severity based on comments.

| Account Information | Component Information | Sample Information |
|---|--|--|
| Account Number: OILANA-1234-5678 Company Name: Contact: JOHN Q. CUSTOMER Address: 1234 MAIN STREET ANYTOWN, WI 54555 US Phone Number: 715-555-5555 | Component ID: John's Truck Secondary ID: 2014 Suburban Component Type: Unleaded Gasoline Engine Manufacturer: Chevrolet Model: 5.3L Application: Transportation Sump Capacity: 7 qts | Tracking Number: 12345A67890 Lab Number: I-123456 Lab Location: Indianapolis Data Analyst: AKB Sampled: 04-Jul-2015 Received: 07-Jul-2015 Completed: 09-Jul-2015 |
| Filter Information | Miscellaneous Information | Product Information |
| Filter Type: Full-Flow Micron Rating: 20 | | Product Manufacturer: AMSOIL Product Name: ASL SIG SIGNATURE SERIES Viscosity Grade: SAE 5W30 |
| Comments | NEW LUBE REFERENCE - Data used for baseline reference only; | |

| | | | |
|-------------------|--------------------------|---------------------------|-----------------------|
| Wear Metals (ppm) | Contaminant Metals (ppm) | Multi-Source Metals (ppm) | Additive Metals (ppm) |
|-------------------|--------------------------|---------------------------|-----------------------|

Reading the Oil Analyzers Fluid-Analysis Report

Once the oil sample is processed, Oil Analyzers provides a complete fluid-analysis report detailing customer and equipment information, recommendations, elemental analysis, sample information, contaminants and fluid properties. This information is critical in determining the integrity of both the lubricant and the equipment.



Lubricant Analysis Report

North America: 1-877-458-3315

| | | | | |
|--------|---|----------|---|----------|
| 0 | 1 | 2 | 3 | 4 |
| NORMAL | | ABNORMAL | | CRITICAL |

Overall report severity based on comments.

| Account Information | | Component Information | | Sample Information | |
|---|--|--|--|--|--|
| Account Number: OILANA-1234-5678 Company Name: Contact: JOHN Q. CUSTOMER Address: 1234 MAIN STREET ANYTOWN, WI 54555 US Phone Number: 715-555-5555 | | Component ID: John's Truck Secondary ID: 2014 Suburban Component Type: Unleaded Gasoline Engine Manufacturer: Chevrolet Model: 5.3L Application: Transportation Sump Capacity: 7 qts | | Tracking Number: 12345A67890 Lab Number: 1-123456 Lab Location: Indianapolis Data Analyst: AKB Sampled: 04-Jul-2015 Received: 07-Jul-2015 Completed: 09-Jul-2015 | |
| Filter Information | | Miscellaneous Information | | Product Information | |
| Filter Type: Full-Flow Micron Rating: 20 | | | | Product Manufacturer: AMSOIL Product Name: ASL SIG SIGNATURE SERIES Viscosity Grade: SAE 5W30 | |
| Comments | | NEW LUBE REFERENCE - Data used for baseline reference only; | | | |

| Sample # | Wear Metals (ppm) | | | | | | | | | | Contaminant Metals (ppm) | | | Multi-Source Metals (ppm) | | | | Additive Metals (ppm) | | | | | | |
|----------|-------------------|----------|--------|----------|--------|------|-----|---------|--------|----------|--------------------------|--------|-----------|---------------------------|------------|----------|-----------|-----------------------|-------|-----------|---------|--------|-------------|------|
| | Iron | Chromium | Nickel | Aluminum | Copper | Lead | Tin | Cadmium | Silver | Vanadium | Silicon | Sodium | Potassium | Titanium | Molybdenum | Antimony | Manganese | Lithium | Boron | Magnesium | Calcium | Barium | Phosphorous | Zinc |
| 1 | 1 | 0 | 0 | 0 | 0 | 0 | 0 | 0 | 0 | 0 | 2 | 0 | 0 | 0 | 0 | 0 | 0 | 0 | 0 | 9 | 3043 | 1 | 999 | 1066 |
| 2 | 1 | 0 | 0 | 1 | 0 | 0 | 0 | 0 | 0 | 0 | 3 | 2 | 1 | 0 | 0 | 0 | 0 | 0 | 1 | 7 | 3649 | 2 | 1174 | 1268 |

| Sample # | Sample Information | | | | | | | Contaminants | | | Fluid Properties | | | | | |
|----------|--------------------|---------------|-----------|-----------|-------------|------------|---------------|---------------|-------|------------|------------------|------------------|-------------|-------------|-----------|-----------|
| | Date Sampled | Date Received | Lube Time | Unit Time | Lube Change | Lube Added | Filter Change | Fuel Dilution | Soot | Water | Viscosity 40°C | Viscosity 100 °C | Acid Number | Base Number | Oxidation | Nitration |
| | | | h | h | | gal | | % Vol | % Vol | % Vol | cSt | cSt | mg KOH/g | mg KOH/g | abs/cm | abs/cm |
| 1 | 01-Nov-2012 | 09-Nov-2012 | 10,000 | 13,000 | Yes | | Yes | | | <.1 - FTIR | | 14.2 | | 10.7 | 39 | 9 |
| 2 | 15-Feb-2014 | 21-Feb-2014 | 10,000 | 23,000 | Yes | | Yes | | | <.1 - FTIR | | 14.3 | | 10.9 | 52 | 8 |

| | | | | | | | | | | | | | | | |
|-------------------------------|--|--|--|--|--|--|--|--|--|--------------------|--|--|--|--|--|
| Particle Count (particles/mL) | | | | | | | | | | Additional Testing | | | | | |
|-------------------------------|--|--|--|--|--|--|--|--|--|--------------------|--|--|--|--|--|

Customer and Equipment Information

This section of the report includes the severity status of the sample and information regarding the account, component and sample, as well as information regarding the filter and product. It also includes a miscellaneous information section for any additional information recorded by the lab.

Account Information: Specifies the account number (assigned by the lab) and contact information of the company or individual who submitted the sample for analysis.

Component Information: Specifies the component ID and secondary ID (provided by the customer) for equipment identification. Also specifies component type, manufacturer, model, application and sump capacity.

Sample Information: Identifies the location of the analysis; the data analyst's initials; and the dates the sample was taken, received and completed. Turnaround issues may be indicative of storing samples too long before shipping or shipping service problems.

Severity Status Levels: Indicates the status of severity of the submitted oil sample*.

Severity 0 (Normal) = Oil is suitable for continued use.

Severity 1 (Normal) = Oil is suitable for continued use. Observe for trends in future tests.

Severity 2 (Abnormal) = Oil is suitable for continued use. Resample at half the normal interval.

Severity 3 (Abnormal) = Replace oil filter and top off system with fresh oil. Resample at half the normal interval or change oil.

Severity 4 (Critical) = Change oil and filter if not done when sample was taken.

*These particular statuses are specific to engine oil samples, but often reflect the lab's recommendations for other fluids.

| Oil Analyzers INC. | | Lubricant Analysis Report | | <table border="1"> <tr> <td>0</td> <td>1</td> <td>2</td> <td>3</td> <td>4</td> </tr> <tr> <td>NORMAL</td> <td></td> <td>ABNORMAL</td> <td></td> <td>CRITICAL</td> </tr> </table> | | 0 | 1 | 2 | 3 | 4 | NORMAL | | ABNORMAL | | CRITICAL |
|---|---|--|---------------------------|--|-----------------------|---|---|---|---|---|--------|--|----------|--|----------|
| 0 | 1 | 2 | 3 | 4 | | | | | | | | | | | |
| NORMAL | | ABNORMAL | | CRITICAL | | | | | | | | | | | |
| North America: 1-877-458-3315 Overall report severity based on comments. | | | | | | | | | | | | | | | |
| Account Information | | Component Information | | Sample Information | | | | | | | | | | | |
| Account Number: OILANA-1234-5678 Company Name: Contact: JOHN Q. CUSTOMER Address: 1234 MAIN STREET ANYTOWN, WI 54555 US Phone Number: 715-555-5555 | | Component ID: John's Truck Secondary ID: 2014 Suburban Component Type: Unleaded Gasoline Engine Manufacturer: Chevrolet Model: 5.3L Application: Transportation Sump Capacity: 7 qts | | Tracking Number: 12345A67890 Lab Number: I-123456 Lab Location: Indianapolis Data Analyst: AKB Sampled: 04-Jul-2015 Received: 07-Jul-2015 Completed: 09-Jul-2015 | | | | | | | | | | | |
| Filter Information | | Miscellaneous Information | | Product Information | | | | | | | | | | | |
| Filter Type: Full-Flow Micron Rating: 20 | | | | Product Manufacturer: AMSOIL Product Name: ASL SIG SIGNATURE SERIES Viscosity Grade: SAE 5W30 | | | | | | | | | | | |
| Comments | | NEW LUBE REFERENCE - Data used for baseline reference only; | | | | | | | | | | | | | |
| Wear Metals (ppm) | | Contaminant Metals (ppm) | Multi-Source Metals (ppm) | | Additive Metals (ppm) | | | | | | | | | | |

Filter Information: Identifies the filter used and its micron rating.

Miscellaneous Information: Details additional miscellaneous information.

Product Information: Identifies the sample lubricant and its properties.

Note: Missing or incomplete information is printed in red.

Comments

A data analyst's job is to explain and, if necessary, recommend actions for rectifying significant changes in the lubricant or the unit's condition. Reviewing comments before looking at the actual test results will provide a road map to the report's most important information. Any actions that need to be taken are listed in order of severity. Justifications for recommending those actions immediately follow.

| Comments | | NEW LUBE REFERENCE - Data used for baseline reference only; | | | | | | | | | | | | | | | | | | | | | | |
|-------------------------------|--------------------|---|-----------|-----------|-------------|------------|---------------|---------------|--------|--------------------|--------------------------|------------------|------------------|---------------------------|------------|-----------|-----------|---------|-----------------------|-----------|---------|--------|-------------|------|
| Sample # | Wear Metals (ppm) | | | | | | | | | | Contaminant Metals (ppm) | | | Multi-Source Metals (ppm) | | | | | Additive Metals (ppm) | | | | | |
| | Iron | Chromium | Nickel | Aluminum | Copper | Lead | Tin | Cadmium | Silver | Vanadium | Silicon | Sodium | Potassium | Titanium | Molybdenum | Antimony | Manganese | Lithium | Boron | Magnesium | Calcium | Barium | Phosphorous | Zinc |
| 1 | 1 | 0 | 0 | 1 | 0 | 0 | 0 | 0 | 0 | 0 | 2 | 0 | 0 | 0 | 0 | 0 | 0 | 0 | 0 | 9 | 3043 | 1 | 999 | 1066 |
| 2 | 1 | 0 | 0 | 1 | 0 | 0 | 0 | 0 | 0 | 0 | 3 | 2 | 1 | 0 | 0 | 0 | 0 | 0 | 1 | 7 | 3649 | 2 | 1174 | 1268 |
| Sample # | Sample Information | | | | | | | Contaminants | | | | | Fluid Properties | | | | | | | | | | | |
| | Date Sampled | Date Received | Lube Time | Unit Time | Lube Change | Lube Added | Filter Change | Fuel Dilution | Soot | Water | Viscosity 40 °C | Viscosity 100 °C | Acid Number | Base Number | Oxidation | Nitration | | | | | | | | |
| 1 | 01-Nov-2012 | 09-Nov-2012 | 10,000 | 13,000 | Yes | | Yes | | | <.1 - FTIR | | 14,2 | | 10,7 | 39 | 9 | | | | | | | | |
| 2 | 15-Feb-2014 | 21-Feb-2014 | 10,000 | 23,000 | Yes | | Yes | | | <.1 - FTIR | | 14,3 | | 10,9 | 52 | 8 | | | | | | | | |
| Particle Count (particles/mL) | | | | | | | | | | Additional Testing | | | | | | | | | | | | | | |



Elemental Analysis

Elemental analysis, or spectroscopy, identifies the type and amount of wear particles, contamination and oil additives. Determining metal content can alert you to the type and severity of wear occurring in the unit. Measurements are expressed in parts per million (ppm).

Combinations of these **Wear Metals** can identify components within the machine that are wearing. Knowing what metal a unit is made of can greatly influence an analyst's recommendations and determine the value of elemental analysis.

Knowledge of the environmental conditions under which a unit operates can explain varying levels of **Contaminant Metals**. Excessive levels of dust and dirt can be abrasive and accelerate wear.

Additive Metals and **Multi-Source Metals** may turn up in test results for a variety of reasons. Molybdenum, antimony and boron are additives in some oils. Magnesium, calcium and barium are often used in detergent/dispersant additives. Phosphorus is used as an extreme-pressure additive in gear oils. Phosphorus and zinc are used in anti-wear additives (ZDDP).

| Sample # | Wear Metals (ppm) | | | | | | | | | | Contaminant Metals (ppm) | | | Multi-Source Metals (ppm) | | | | | Additive Metals (ppm) | | | | | |
|----------|-------------------|----------|--------|----------|--------|------|-----|---------|--------|----------|--------------------------|--------|-----------|---------------------------|------------|----------|-----------|---------|-----------------------|-----------|---------|--------|-------------|------|
| | Iron | Chromium | Nickel | Aluminum | Copper | Lead | Tin | Cadmium | Silver | Vanadium | Silicon | Sodium | Potassium | Titanium | Molybdenum | Antimony | Manganese | Lithium | Boron | Magnesium | Calcium | Barium | Phosphorous | Zinc |
| 1 | 1 | 0 | 0 | 0 | 0 | 0 | 0 | 0 | 0 | 0 | 2 | 0 | 0 | 0 | 0 | 0 | 0 | 0 | 0 | 9 | 3043 | 1 | 999 | 1066 |
| 2 | 1 | 0 | 0 | 1 | 0 | 0 | 0 | 0 | 0 | 0 | 3 | 2 | 1 | 0 | 0 | 0 | 0 | 0 | 1 | 7 | 3649 | 2 | 1174 | 1268 |

Sample Information, Contaminants and Fluid Properties

Test results are listed according to age of the sample – oldest to most recent, top to bottom – so that trends are apparent. Significant changes are flagged and printed in the gray areas of the report. For lubricant lower and upper limitations, see pages 12 and 13.

Samples are listed by **Date Received**. They are also assigned a **Lab Number** for easy internal tracking. It is important to note whether or not the **Lube** has been **Changed** since the last sample was taken.

Fuel and **Soot** (only on engine oil samples) are reported in % of volume. High fuel dilution decreases unit load capacity. Excessive soot is a sign of reduced combustion efficiency.

Water in oil decreases lubricity, prevents additives from working and furthers oxidation. Its presence can be determined by crackle or FTIR and is reported in % of volume. Water by Karl Fischer ASTM D1744 determines the **amount** of water present.

Viscosity measures a lubricant's resistance to flow at temperature and is considered its most important physical property. Depending on the product, it is tested at 40 or 100 degrees Centigrade and reported in Centistokes.

| Sample Information | | | | | | | | Contaminants | | | Fluid Properties | | | | | |
|--------------------|--------------|---------------|-----------|-----------|-------------|------------|---------------|---------------|-------|------------|------------------|------------------|-------------|-------------|-----------|-----------|
| Sample # | Date Sampled | Date Received | Lube Time | Unit Time | Lube Change | Lube Added | Filter Change | Fuel Dilution | Soot | Water | Viscosity 40°C | Viscosity 100 °C | Acid Number | Base Number | Oxidation | Nitration |
| | | | h | h | Yes | gal | Yes | % Vol | % Vol | % Vol | cSt | cSt | mg KOH/g | mg KOH/g | abs/cm | abs/cm |
| 1 | 01-Nov-2012 | 09-Nov-2012 | 10,000 | 13,000 | Yes | | Yes | | | <.1 - FTIR | | 14.2 | 10.7 | 39 | 9 | |
| 2 | 15-Feb-2014 | 21-Feb-2014 | 10,000 | 23,000 | Yes | | Yes | | | <.1 - FTIR | | 14.3 | 10.9 | 52 | 8 | |

| Particle Count (particles/mL) | | | | | | | | | | Additional Testing | | |
|-------------------------------|----------|-----------------|--------|--------|---------|---------|---------|---------|---------|--------------------|-------------|--|
| Sample # | ISO Code | Based On 4/6/14 | > 4 µm | > 6 µm | > 10 µm | > 14 µm | > 21 µm | > 38 µm | > 70 µm | > 100 µm | Test Method | |
| 1 | // | | | | | | | | | | | |
| 2 | // | | | | | | | | | | | |

Comments are advisory only and are based on the assumption that the sample and data submitted are valid. Missing fluid or component information limits the evaluation. No warranty is expressed or implied.

The **ISO Code** is an index number that represents a range of particles within a specific micron range, (e.g. 4, 6, 14). Each class designates a range of measured particles per one ml of sample. This test is valuable in determining large particle wear in filtered systems. This section is only used when a particle count is specified.

Acid and Base Numbers are measured to determine if the lubricant is becoming acidic. A lubricant that becomes too acidic can cause corrosion to internal engine components. Note that acid and base numbers do not begin at zero.

Oxidation measures the breakdown of the lubricant due to age and operating conditions. **Nitration** occurs when nitrogen oxides react with the lubricant, causing deposit formation and an increase in viscosity. Note that oxidation and nitration readings do not begin at zero.

Typical Lubricant Guidelines

The charts below describe the properties typical of various lubricants. Consulting these charts while reading the fluid analysis report may help you understand the indicated severity level and recommendations.

| Diesel & Gasoline Engine Oil Guidelines (for physical properties, contaminants & degradation) | | | | |
|---|---------------------|--|--|---|
| | Normal | Elevated | Abnormal | Critical |
| Water | 0.10% | 0.30% | 0.40% | 0.50% |
| Fuel Dilution (Gasoline) | <2.4% | 2.5% - 3.4% | 3.5% - 4.9% | >5.0% |
| Fuel Dilution (Diesel) | <3.4% | 3.5% - 4.9% | 5.0% - 6.9% | >7.0% |
| Viscosity | In grade | +/- one SAE/ISO viscosity grade change | +/- one SAE/ISO viscosity grade change | +/- two SAE/ISO viscosity grade changes |
| Soot (Diesel Only) | <3.4% | 3.5% - 4.9% | 5.0% - 6.9% | >7.0% |
| Oxidation | Baseline + 17 | Baseline + 20 | Baseline + 23 | Baseline + 27 |
| Nitration | Baseline + 17 | Baseline + 20 | Baseline + 23 | Baseline + 27 |
| Base Number TBN | 65% depletion | 75% depletion | 83% depletion | 90% depletion or <1.00 |
| Acid Number TBN | 1x new-oil baseline | 2x new-oil baseline | 3x new-oil baseline | 4x new-oil baseline |

| SAE Engine & Gear Oil Viscosity Grade @ 100°C (Automotive Fluids) | | |
|--|-----------------|-----------------|
| SAE Engine Oil Grade @ 100°C | Min cST. | Max cST. |
| 16 | 6.1 | <8.2 |
| 20 | 6.9 | <9.3 |
| 30 | 9.3 | <12.5 |
| 40 | 12.5 | <16.3 |
| 50 | 16.3 | <21.9 |
| 60 | 21.9 | <26 |
| SAE Gear Oil | Min cST. | Max cST. |
| 90 | 13.5 | <24.0 |
| 140 | 24.0 | <41.0 |
| 250 | 41.0 | No Reg. |

ISO Viscosity Grade @ 40°C (Industrial Fluids)

| ISO Viscosity Grade @ 40°C | Min cST. | Max cST. |
|----------------------------|----------|----------|
| 2 | 1.98 | 2.42 |
| 3 | 2.88 | 3.52 |
| 5 | 4.14 | 5.06 |
| 7 | 6.12 | 7.48 |
| 10 | 9.00 | 11.0 |
| 15 | 13.5 | 16.5 |
| 22 | 19.8 | 24.2 |
| 32 | 28.8 | 35.2 |
| 46 (AGMA 1) | 41.4 | 50.6 |
| 68 (AGMA 2) | 61.2 | 74.8 |
| 100 (AGMA 3) | 90.0 | 110 |
| 150 (AGMA 4) | 135 | 165 |
| 220 (AGMA 5) | 198 | 242 |
| 320 (AGMA 6) | 288 | 352 |
| 460 (AGMA 7) | 414 | 506 |
| 680 (AGMA 8) | 612 | 748 |
| 1000 (AGMA 8A) | 900 | 1100 |
| 1500 | 1350 | 1650 |

Oil Analyzers Fluid-Analysis Test Packages

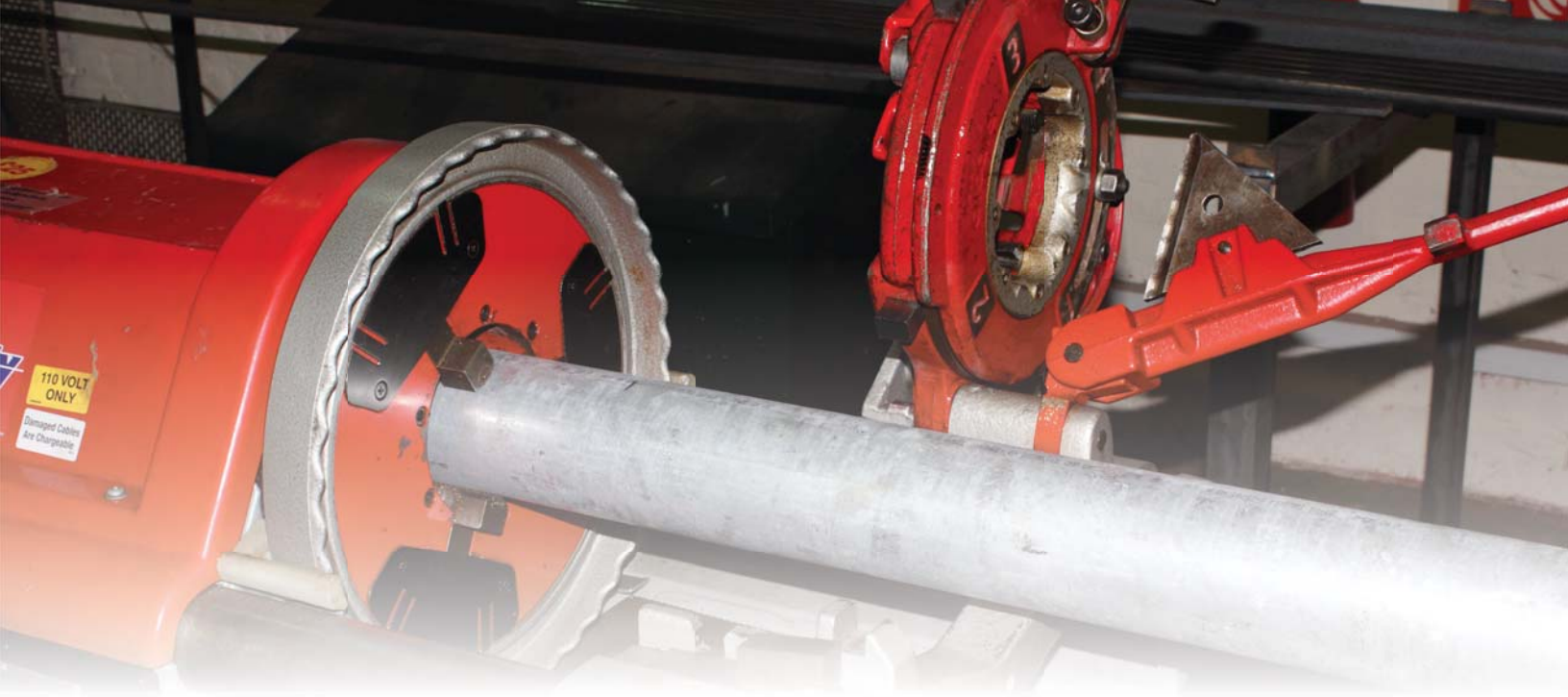
Oil Analyzers fluid analysis provides diagnostic testing designed to evaluate lubricant condition, component wear and contamination in mobile and industrial applications with a test report provided by an independent laboratory for each sample submitted. Refer to the chart below to determine which combination of tests each component will receive.

To order **Oil Analyzers** fluid-analysis kits, visit OAITesting.com or call **800-777-7094**. If you have questions regarding the Oil Analyzers Fluid Analysis Program, call 877-458-3315. If you would like to run an add-on test or need help understanding your test reports, call **715-395-0222**. Add-on testing information is available at OAITesting.com.

| Full-Service Kits (KIT01, KIT02, KIT06, KIT401, KIT402) | | | Value Kit (KIT14) | |
|---|-------------------------------|---------------------------|-------------------|---------------------------|
| Applications | Engines | Non-Engines | Engines | Non-Engines |
| Purpose | Monitors wear & contamination | | | |
| 24 Metals by ICP | • | • | • | • |
| % Fuel Dilution | • | | | |
| % Soot | • | | | |
| Water % by Crackle | • | • | | |
| Viscosity @ 40°C | | • (if ISO grade fluid) | • | • (if ISO grade fluid) |
| Viscosity @ 100°C | • | • (if ISO grade fluid) | • | • (if ISO grade fluid) |
| Oxidation/Nitration By FTIR | • | • | | |
| Total Base Number | • | | • | |
| Total Acid Number | | • | | • |

| | |
|---------------|--|
| KIT01 | Oil Analyzers Test Kit, US Postal Service Pre-Paid |
| KIT02 | Oil Analyzers Test Kit, UPS Pre-Paid |
| KIT06 | Oil Analyzers Test Kit, Non Postage Paid |
| KIT401 | Oil Analyzers Test Kit, UPS Pre-Paid (Can.) |
| KIT402 | Oil Analyzers Test Kit, Non Postage Paid (Can.) |
| KIT14 | Oil Analyzers Sample Value Kit, Non Postage Paid (do not use for first oil sample) |

Note: Oil analysis kits cannot be used for coolant or diesel fuel samples. See page 15 for additional sampling kits.



Coolant Kit (KIT09, KIT403)

| |
|---|
| 17 Metals by ICP |
| pH |
| Glycol % (Ethylene or Propylene Glycol) |
| Freeze Point |
| Boil Point |
| Nitrite |
| SCA Number |
| Total Dissolved Solids |
| Specific Conductance |
| Total Hardness |
| Visuals (color, oil, fuel, magnetic precipitate, non-magnetic precipitate, odor & foam) |

| | |
|---------------|---|
| KIT09 | Coolant Test Kit, UPS Pre-Paid |
| KIT403 | Coolant Test Kit, Non Postage Paid (Can.) |

Basic Fuel Kit – Fuel Contamination (KIT10)

| |
|-------------------|
| Water & Sediments |
| Aerobic Bacteria |

Basic Fuel Kit (KIT11)

| |
|-------------------------|
| 24 Metals by ICP |
| Viscosity @ 40°C |
| Calculated Cetane Index |
| Distillation |
| API Gravity |

Sampling Equipment and Supplies

| |
|-----------------------------------|
| Oil Analysis Pump (G1206) |
| Replacement Hose, 25' ft. (G1571) |

LAB LOCATIONS

INDIANAPOLIS

7451 Winton Drive
Indianapolis, IN 46268
Phone: 877-458-3315

HOUSTON

4100 N. Sam Houston Pkwy W.
Ste 250
Houston, TX 77086
Phone: 877-458-3315

SALT LAKE CITY

3060 West California Avenue
Suite B
Salt Lake City, UT 84104
Phone: 877-458-3315

EDMONTON

5140 75th Street
Edmonton, Alberta Canada T6E 6W2
Phone: 877-458-3315

To order Oil Analyzers fluid analysis kits,
please call **800.777.7094** or visit
OAITesting.com

